



第18屆海外台商磐石獎

The 18th Outstanding Overseas Taiwanese SMEs Award



經寶精密股份有限公司

JINPAO PRECISION INDUSTRY CO., LTD.

負責人 Owner：王文山 Wen Shan Wang

地址 Address：Address：631 Soi 12 Bangpo Industrial Estate A.Muang, Samutprakarn, Thailand

電話 Tel：+66(2)7093687 / +66(2)7093367

傳真 Fax：+66(2)3247045 / +66(2)3247046

推薦單位 Recommended by：

中華民國駐泰國台北經濟文化辦事處

Taipei Economic and Cultural Office in Thailand

泰國台灣商會聯合總會

Thai-Taiwan Business Association

泰國台灣會館

Thai-Taiwan Association

營業項目 Business Items：

製造業 Manufacturing

產品名稱 Main Products：

橫跨多產業之精密鈹金產品

Precision metal product fabrication for various industries.

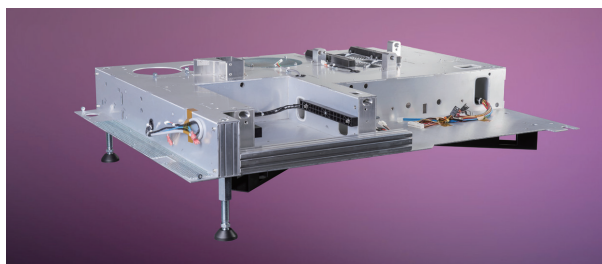


(右)董事長 王文山先生 Chairman: Mr. Wen Shan Wang

(左)總經理 鍾國松先生 General Manager: Mr. Victor Chung



光纖通訊系統櫃
Optical Fiber Communication
System Cabine



3D電影立體放映機組底座

The mechanical parts and sub-assembly of 3D Motion Picture
Projector for Digital Cinema



多媒體自助儲值機體

Multi-media self-refill billing
machine



<http://www.jinpao.co.th>



經寶精密於1998年由王文山董事長及鍾國松總經理領軍創業，專責於金屬鈹金之沖床模具設計及製造。之後因世界潮流所迫，將現有技術延伸，進入門檻較高「少量多樣、快速反應、客製化」之鈹金加工，為經寶精密重新定位，以避開價格競爭市場。經寶精密不斷進行無危機工程再造、觀念再造、技術及管理之提升，漸與業界形成差異化，深耕利基市場，客戶皆為世界知名大廠。

創新 轉型 強化競爭

經寶精密歷經多次轉型、改造，從初期之模具設計與製造，轉型為少量多樣客製化之鈹金加工，進而提升至彈性製造之OEM與ODM型態，同時垂直整合完整之加工鏈，以製造業服務化之理念滿足客戶需求。為因應客製化少量多樣之生產型態，引進自動化換模及生產設備，擺脫經濟批量生產之束縛，在管理提升方面則強化現場即時管理能力，積極建設數位化工廠管理及智能工廠。針對生產作業所開發之KIOSK資訊服務站，可從ERP、PLM系統即時並準確地提供作業員目前生產工件所需之最新資訊，同時也透過KIOSK與MES即時顯現所有生產資訊。

品質第一 客戶優先

經寶精密客戶皆為世界知名大廠，對品質要求甚高，尤其是航太與汽車產業皆有訂定其產業之品質規範，因此積極引進各種品質規範與認證，並陸續取得航太及國防特殊製程認證。同時，建立技術員技術能力鑑定分級，以期能圓滿達成品質水準，以內部稽核確認品質規範之遵守與執行，期使達到滿足客戶需求。



การนิคมอุตสาหกรรมแห่งประเทศไทย
ขอประกาศเกียรติคุณเพื่อแสดงว่า

บริษัท จินปาว พรซิชั่น อินดัสทรี จำกัด

ได้รับการรับรองอุตสาหกรรมสีเขียว ระดับที่ 3
ตาม "โครงการสนับสนุนส่งเสริมโรงงานอุตสาหกรรมในนิคมอุตสาหกรรมเข้าสู่อุตสาหกรรมสีเขียว"

ให้ไว้ ณ วันที่ 30 กันยายน 2558

นายวิวัฒน์ โยงพันธ์

ผู้อำนวยการนิคมอุตสาหกรรมแห่งประเทศไทย

綠色節能之星 Certificate

惜福惜緣 惜人惜物

經寶精密於泰國生根立足，本著企業責任及回饋社會的理念，以經常性之捐贈及服務弱勢族群回饋當地，同時有感泰國技職教育不夠成熟、普及，因此與泰國教育單位合作，捐贈電腦等教學設備，並以亞洲最先進之鈹金技術及設備提供泰國學生實習。經寶精密飲水思源，不敢忘本，以回饋台灣社會，搭建產學合作橋樑，協助台灣學生達成理論與實務合一的學習歷程，並以演講方式至大學、工商團體分享經營理念與探討。

經寶精密認為員工是企業最重要的資產，除強化員工福利外，並建立專責之員工訓練單位，專職於員工教育訓練、種子師資培訓、儲備幹部培訓，同時為使公司內部知識能得到合適的管理與傳承，建置教材管理及數位學習系統。另，經寶精密所有原料及製程均通過RoHS檢驗，落實廢料回收、廢水處理、冷卻水、雨水回收再利用系統、全廠LED燈具節能，太陽能發電等環境保護措施，獲得泰國工業局頒發綠能工廠獎章、泰國工業廳頒發CSR優良企業獎章及Canon green activity 證書。

機會是給準備好的人

經寶精密在不同階段皆有不同之策略思考，涉及產品及產業之結構改變，以迎合市場



變化，持續拓展高利基市場，並進入高技術度、高精密度及高複合加工之航太產業、醫療產業。在產業鏈中，經寶精密位居中心廠之供應商角色，屬B2B之商業模式，雙方之關係應為信任承諾、分享互動之無形鏈相互連結。經寶精密以洞察環境變化，掌握客戶需求，創造客戶滿足，持續競爭優勢。■



研發 Research & Development Department

Founded in 1998 by Mr. Wang, Wen-Shan and Mr. Chung, Kuo-Sung, Jinpao Precision Industry Co., Ltd. first specialized in the design and manufacturing of sheet metal stamping die and mold products. The company later expanded into higher level markets to rapidly respond to high diversity, low volume and customized orders as opposed to mass production. Jinpao progressively strives to improve by constantly reevaluating and enhancing its manufacturing technology, management, and quality. Jinpao now currently receives orders from world-renowned corporations and is considered one of the industry's top manufacturers in Thailand.

Innovation Transformation and Competiveness

Over the years, Jinpao has undergone numerous business transformations. From its early days designing and manufacturing stamping die and mold products, the constantly transforming company has

gradually turned itself into a full-fledged flexible sheet metal manufacturing OEM and ODM business. Through vertical integration of the supply chain, manufacturing services to meet customer needs, and a keen eye for technological innovations, Jinpao is able to thrive without economies of scale. Currently there are technologies in place to actively monitor production processes, manufacturing orders, and company data in real-time. Software systems such as KIOSK, ERP, and PLM are employed to provide relevant information for workers instantly. Furthermore, the systems can communicate data across one another in real-time. Thus, the current production data for efficient factory monitoring can be accessed through MES.

Quality First, Customer First

Boasting a clientele that is known the world over, customer product quality demands are understandably high. Especially aerospace and automotive customers. Jinpao is currently certified by a number of international quality standards to comply with its customers' rigorous requirements. Moreover, internal quality standards are equally as rigorous. Workers are routinely evaluated and retrained to reassess their qualifications along with internal audits conducted to enforce quality standards trusted by customers.

Giving Back

Jinpao is actively engaged in CSR activities as well. As a company based in Thailand, the



自動倉儲送料, 機械手臂折彎 Factory Scene



company takes the responsibility of giving back to society, and has done so through regular donations to various organizations. Jinpao is also a strong believer in education, where attention is given to vocational and technical institutions by providing teaching equipment, computers, and the opportunity to get practical experience with state of the art metal manufacturing technologies.

The company also strives to give back and connect Taiwanese societies by offering students the chance to exercise theoretical knowledge from the classroom in practical applications. So far, 18 interns have been accepted from 3 universities in Taiwan. To date, the factory has hosted multiple factory visits for different universities in Taiwan.

Employees are the most important asset in a company. Here, employees are compensated with salaries, welfare, and retirement savings plan compliant with all Thai Labor Regulations. In addition, Jinpao has set up a dedicated staff training unit to provide educational programs to further develop employee skills. Employees are trained for their fields in production, management, and more. Skilled employees can later become trainers themselves to maintain Jinpao's technical know-how. All training materials and other technical knowledge can be accessed via the company's internal e-learning system at will.

Environmental protection is among Jinpao's key priorities as well. All reusable materials and scraps are recycled, wastewater is properly treated before release, rainwater and grey water is utilized, lighting has been replaced by LEDs, all manufacturing processes are RoHS compliant. Solar panels have even been installed in addition to other environmental protection policies. All this have earned Jinpao the Green Factory Award from the Industrial Estate Authority of Thailand, the Canon green activity certificate, and other CSR awards for excellence.

Opportunities are for those who are prepared for it

Jinpao will continue to be adaptive to the



晚會 Evening Party

market environment while paying close attention to customer's wants and needs in order to remain competitive. The company has adopted many strategies and has undergone numerous changes in the past to meet new changes and demands. It has expanded and established itself in niche markets of high-tech, high-precision and highly complex manufacturing of aerospace and medical industries.

Adopting the B2B business model as the supplier in the industrial supply chain, Jinpao's relationship with its customers is built on trust, commitment, and goodwill. As the customer's success is also the success of the supplier, the company aims to create value for its customers and continue to support each other in the face of the world's ever changing market landscape. ■



綜合評語 Commentary

以高附加價值為目標，產品涵蓋航太、醫療、通訊、綠能、汽車及食品工業等市場，企業轉型成功。通過多項航太工業相關認證，具特殊製程之技術能力，並導入數位化管理及培訓，落實專業經理人分工，力求轉型升級。

The company successfully transformed itself by targeting high value-added segments with products that span aerospace, medical, communications, green energy, automotive and food processing industries. The company has acquired a number of aerospace industry certifications and is capable of providing special production processes. Online management and training have been introduced along with professional managers as part of the transformation process.